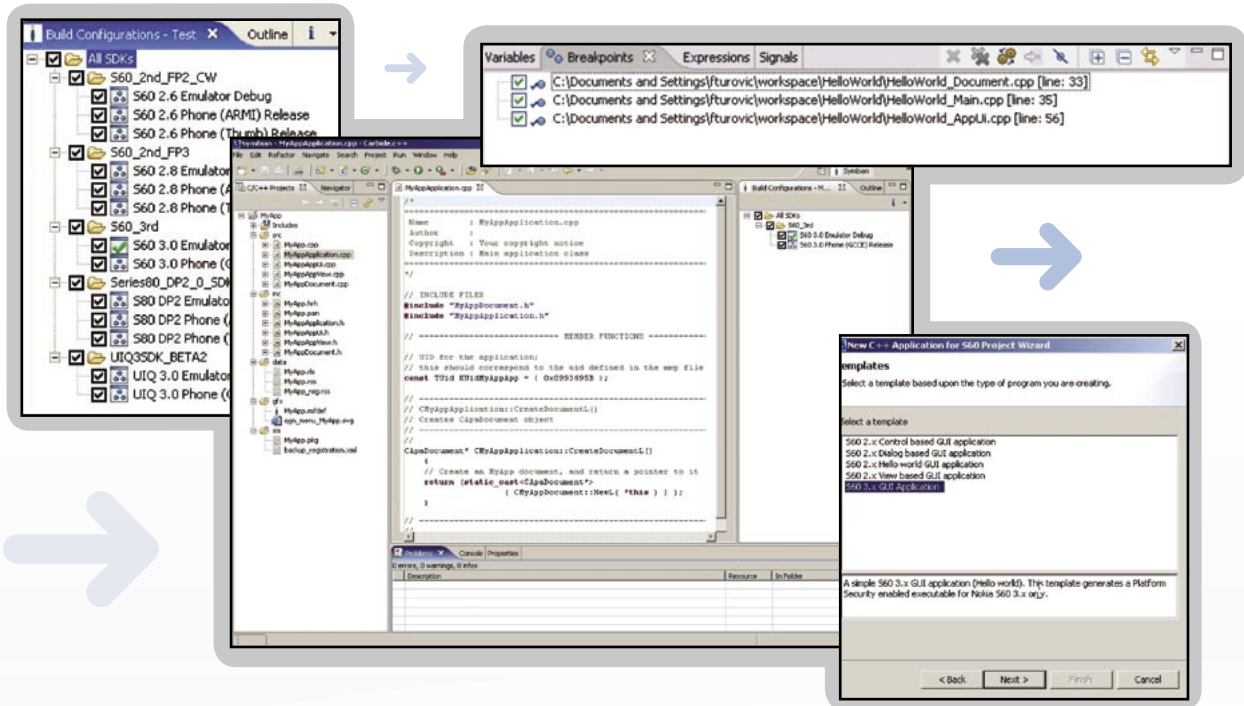


Carbide.c++ Express

A Complete C++ Suite of Development Tools



Carbide.c++ Express 1.0

Carbide.c++ Express is the first in a family of Eclipse-based development environments for Symbian OS C++ application development. It is based on the Eclipse Integrated Development Environment (IDE) and C/C++ development tools from the Eclipse CDT project.

Carbide.c++ Express is a powerful development tool replacing the SDK command line tools used as a low cost alternative for Symbian OS development. Carbide.c++ Express enables developers of non-commercial applications to still benefit from the improved development efficiency of a fully featured Integrated Development Environment (IDE).

Carbide.c++ Express makes it easy for developers to enter the world of mobile application development. The tool is available as a single, no-cost download, is easy to install, and quickly guides the newcomer through all the steps required to write, build, and deploy a Symbian OS application on a mobile phone.

www.forum.nokia.com/carbide

Key Features

- New-project wizard.
- New-project templates.
- Online tutorial.
- Project import.
- Extensive SDK support.
- Full-featured debugging.
- Integrated project builder.

System Requirements

- Operating system:
Microsoft Windows 2000 Pro SP4 or
Microsoft Windows XP Pro SP2.

Minimum Hardware

- 1800 MHz processor; x86 architecture.
- 1,024 x 768-pixel screen.
- 16-bit color.
- 512 MB of RAM, 1024 MB recommended.
- 160 MB disk space for Carbide.c++.
- Enough disk space for at least one SDK, see relevant SDK for information.

Carbide.c++ Express — Features and Description

Leverage All Eclipse/CDT Features

As Carbide.c++ Express is based on Eclipse, the user has full access to all the Eclipse general features as well as the C/C++ specific features of the Eclipse CDT tools.

Create Full Projects to Get Started

The New Project Wizard gets developers started easily. The user can either create a new Symbian OS project using one of the supplied projects templates or the user can import an existing application.

Project Import

Developers can bring existing projects into the Carbide IDE by pointing the Import Project Wizard to an existing *.mmp file or a bld.inf file.

New-Project Templates

Project templates help speed code development. The following templates are included in versions applicable to the Series 60 Platform 2nd Edition and S60 Platform 3rd Edition

- Hello World.
- View-based application.
- Dialog-based application.
- Console application.
- DLL.
- Static library.

Extensive SDK Support

Installed SDKs can be detected and key information imported into the IDE automatically. The IDE uses the information to facilitate programming with integrated API help, code highlighting, and code completion for all available APIs. It supports the following SDKs:

- Series 60 platform 2nd Edition.
- S60 Platform 3rd Edition.
- UIQ.

Integrated Project Builder

Developers can build full projects right inside the IDE for debugging in the integrated emulators or for packaging and downloading to mobile phones. The Project Builder is based on the CDT Managed Build system.

Preconfigured Build Configurations

When creating a new project, the developer can easily select what SDKs will be associated with the project. For each SDK and build target (e.g. WINSCW or ARMI), full build configurations will be automatically created. Switching between builds for different targets can then be done by simply choosing the correct build configuration



Full-Featured Debugging

The Carbide.c++ debugger provides a rich set of debugging features designed to help the developer find and repair software defects quickly. These include the following:

- **Multicomponent projects** (e.g. consisting of an EXE and a DLL) can be debugged together.
- **Symbian descriptors** are automatically identified and their value is displayed in a programmer-friendly format.
- **Thread windows** display information about a suspended process during a debugging session.
- **Breakpoints** are easily set and removed in source code.
- **Watchpoints** halt program execution when a specific location in memory changes value or is accessed.
- **Simple module and function browsing** enables access to an internal table of all modules, global variables, and functions within a given debugging context.
- **Memory view** offers the fastest way to display and modify the contents of target memory, allowing the developer to find a value in memory, compare memory regions, and upload and download memory to a file using this view.

Symbian 9 Security Handling

When building for Symbian 9 phones, the build steps automatically include application signing as required by Symbian 9 platform security. When the application does not require special capabilities, a certificate is automatically generated. The user can also specify other certificate such as Symbian Signed Developer Certificates.

Easy Deployment

The build system creates installable .sis files as part of the build. If the user has PC Connectivity software such as the Nokia PC Suite installed, the user can deploy the application to the phone for installation by simply double-clicking on the created installation file (.sis file).

Online Help

Carbide.c++ Express comes with a full set of Online Help to guide the user through the use of the tool.



Carbide
Carbide.c++ Express

www.forum.nokia.com/carbide

www.forum.nokia.com/tools

Copyright © 2006 Nokia Corporation. All rights reserved.

Nokia and Nokia Connecting People are registered trademarks of Nokia Corporation. Other product and company names mentioned herein may be trademarks or trade names of their respective owners.

Disclaimer

The information in this document is provided "as is," with no warranties whatsoever, including any warranty of merchantability, fitness for any particular purpose, or any warranty otherwise arising out of any proposal, specification, or sample. Furthermore, information provided in this document is preliminary, and may be changed substantially prior to final release. This document is provided for informational purposes only.

Nokia Corporation disclaims all liability, including liability for infringement of any proprietary rights, relating to implementation of information presented in this document. Nokia Corporation does not warrant or represent that such use will not infringe such rights.

Nokia Corporation retains the right to make changes to this specification at any time, without notice.

License

A license is hereby granted to download and print a copy of this specification for personal use only. No other license to any other intellectual property rights is granted herein.