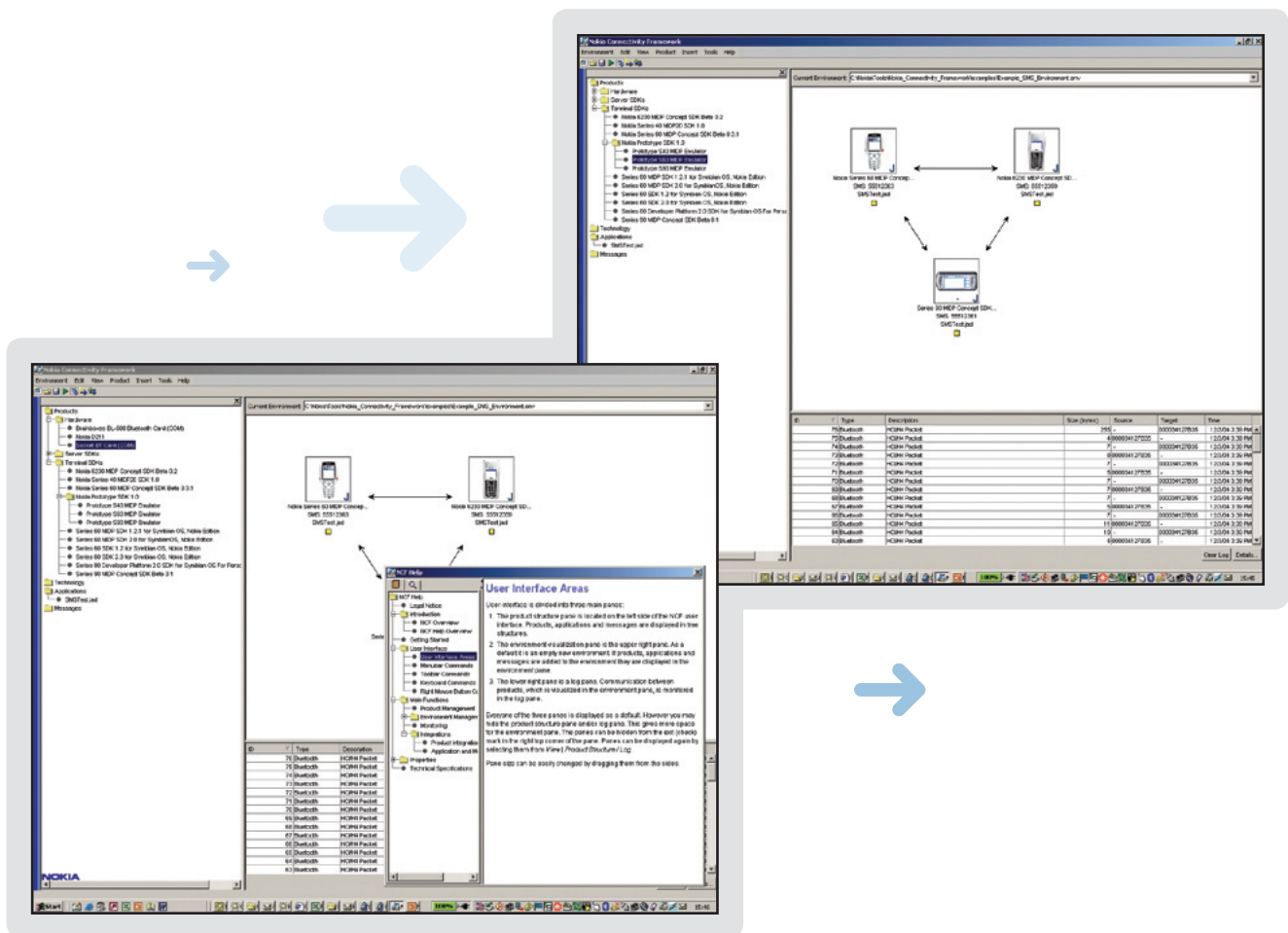


Nokia Connectivity Framework 1.2



Nokia Connectivity Framework 1.2 is a tool to visualize, construct, maintain, and modify emulation or testing environments that utilize Nokia SDK emulators. The Connectivity Framework facilitates connectivity between Nokia Developer Platform SDK emulators, between an emulator and a device, and between an emulator and a server application, which assists in the creation and testing of connected applications for Nokia devices. Bluetooth, Infrared Data Association (IrDA), Short Message Service (SMS), and Multimedia Messaging Service (MMS) connectivity technologies are supported. SMS, IrDA, and Bluetooth traffic can also be run through selected hardware cards. The Connectivity Framework monitors communications between the components in the test environment, providing a comprehensive activity log. Practical uses include testing multiplayer games and chat applications, as well as tracing client/server interaction.

Key Features

- SDK-to-SDK connectivity support.
- SDK-to-device connectivity support.
- SDK-to-server connectivity support.
- Versatile user interface.
- Environment management.
- Support for tracing communications.
- Autodetection.
- Product integration wizard.

System Requirements

- Microsoft Windows Professional 2000 (Service Pack 4) or Microsoft Windows XP Professional (SP1).
- 256 MB of RAM.
- 800-MHz or faster Pentium-class processor.
- 100 MB of free disk space.
- Java™ Runtime Environment (JRE) 1.4.1_02 or later.

Nokia Connectivity Framework 1.2 — Features And Descriptions

Connectivity Technology Support

Nokia Connectivity Framework 1.2 enables the verification of an application's connectivity, utilizing Internet, SMS, MMS, IrDA, and Bluetooth technologies. This accelerates application creation, since the connectivity features can be verified without a device or live mobile networks.

SDK-To-SDK Connectivity Support

Communication connections can be created between multiple SDK emulators running on a PC, allowing device-to-device communications to be tested and verified.

SDK-To-Device Connectivity Support

Communication connections can be created between SDK emulators running on a PC and a device to verify live communications while retaining the efficiency of PC-based testing and verification.

SDK-To-Server Connectivity Support

Communication connections can be created between SDK emulators running on a PC and a device to verify live communications while retaining the efficiency of PC-based testing and verification.

Versatile User Interface

Nokia Connectivity Framework 1.2 has an intuitive graphical user interface, providing easy access to all the necessary functionality from easy-to-use menus.

Environment Management

Nokia Connectivity Framework 1.2 provides features to efficiently manage multiple environments (collections of SDK emulators, hardware devices, and the connections between them) for different application development projects, without the need to create verification environments from scratch. The functionality allows connectivity environments to be created, saved, started, and stopped. The tool includes several example environments, providing an easy way to get started.

Communications Tracing Support

Communication between emulators, devices, and servers can be traced, in detail, using the tool's comprehensive log.

Auto Detection

All new Nokia Developer Platform SDKs are automatically detected and integrated into Nokia Connectivity Framework 1.2, making them available for immediate use.

Product Integration Wizard

Nokia Connectivity Framework 1.2 can be used to communicate with other software or hardware products that support the Nokia Connectivity Framework's communication and content information. This feature allows the use of tools of choice, thereby accelerating the development process.

Hardware Card Support

The following hardware cards are supported:

- Nokia D211.
- Socket Bluetooth.
- Brainboxes BL-500 PCMCIA Bluetooth Card.
- Bluetooth technology USB Adapters.

Server-Side Interface Support

Nokia Connectivity Framework 1.2 supports the following server-side components:

- Nokia Short Message Service Center (SMSC) (Computer Interface to Message Distribution [CIMD] 2.0)
- Nokia Multimedia Messaging Service Center (MMSC) (External Application Interface [EAIIF] 3.0).

This enables application connectivity to be verified against GSM network components.

Documentation

Comprehensive online documentation gets new users up to speed quickly with "Introduction" and "Getting Started" sections, and offers a comprehensive description of the features and functionality of the tool.

www.forum.nokia.com/tools



Copyright © 2005. All rights reserved. Nokia and Nokia Connecting People are registered trademarks of Nokia Corporation. Reproduction, transfer, distribution, or storage of part or all of the contents in this document in any form without the prior written permission of Nokia is prohibited. Nokia is a registered trademark of Nokia Corporation. The Java programming language and the J2ME platform are registered trademarks of Sun Microsystems. Other product or company names mentioned herein may be trademarks or trade names of their respective owners. Nokia operates a policy of continuous development. Nokia reserves the right to make changes and improvements to any of the products described in this document without prior notice. Under no circumstances shall Nokia be responsible for loss of data or income of any special, incidental, consequential or indirect damages howsoever caused. The contents of this document are provided "as is." Except as required by appropriate law, no warranties of any kind, either express or implied, including, but not limited to the implied warranties of merchantability and fitness for a particular purpose, are made in relation to the accuracy, reliability, or contents of this document. Nokia reserves the right to review this document or withdraw it at any time without prior notice. Other product and company names mentioned herein might be trademarks or trade names of their respective owners.