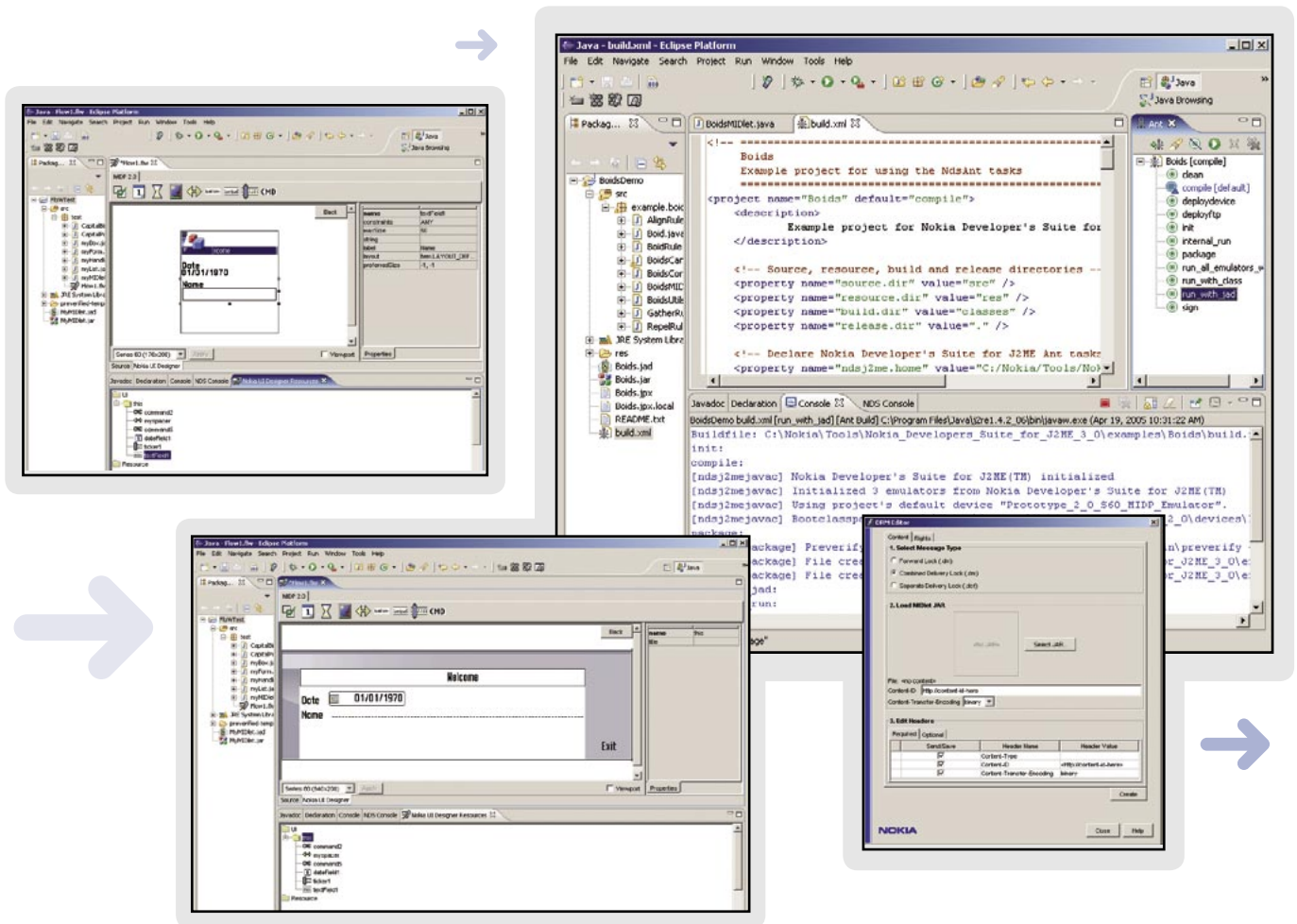


Nokia Developer's Suite 3.0 for J2ME™



Nokia Developer's Suite for J2ME™ is a software development tool for Java™ 2 Platform, Micro Edition (J2ME) developers that enhances the development and verification of applications for Nokia devices. It provides tools for creating MIDP and Personal Profile applications and deployment packages, signing applications, and deploying applications to devices. It is also an essential tool for managing, configuring, and running emulators for various Nokia platform and device SDKs.

Key Features

- Class creator.
- UI designer.
- Screen flow designer.
- Web Services client tool.
- Package creator.
- Package signer.
- MIDP and Personal Profile support.
- DRM editor.
- Application deployer.
- Emulator management.
- Ant Script support for tool features.

System Requirements

- Microsoft Windows 2000 Professional (Service Pack 3), or Microsoft Windows XP Professional (SP1a).
- 256 MB of RAM.
- 250 MB of disk space (Windows).
- 667-MHz or faster Pentium-class processor.
- Display capable of 16-bit color with 1,024 x 768 pixel resolution.
- Keyboard and mouse.
- Java 2 SDK 1.4.1_02 or later.

Class Creator

The class creator tool enables class source files to be created for a mobile Java application, speeding up development. Class source files are created using either the Connected Limited Device Configuration (CLDC) and Mobile Information Device Profile (MIDP) API or Connected Device Configuration (CDC) and Personal Profile (PP) API classes from the default emulator device.

UI Designer

The UI designer tool facilitates the design of MIDP user interface layouts and tiled layers for games. The tool can be used with a stand-alone installation of Nokia Developer's Suite for J2METM or with a supported integrated development environment (IDE).

Screen Flow Designer

The Screen flow designer allows application logic to be create easily for MIDP UI designs. UI components can be drag and drop into the designer view and connected together to create the application logic. The application code is generated automatically and it can be tested easily in an emulator.

Web Services client tool

The Web Services client tool generates the stub classes for a Web Services client from Web Service Definition Language (WSDL) description files. These classes provide a simple interface for accessing Web Services and make it easier for developers to create mobile Web Services applications.

Package Creator

The package creator assists with the construction of MIDP or PP application packages. It efficiently adds all the class and other files to the Java Archive (JAR) file and defines the Java Application Descriptor (JAD) file.

Package Signer

The Sign Application Package tool is used to sign MIDP 2.0 MIDlet application packages. Signing complies with the MIDP 2.0 security model using the signer's private key combined with the public key certificate. A signed application allows a device user to verify the sender and integrity of the application before installation.

Application Deployer

The deployment tool deploys mobile Java applications to devices through Bluetooth wireless technology, IrDA, USB, or an RS-232 serial cable and servers using Passive FTP.

Personal Profile support

J2ME™ Personal Profile support is included for many of the tool features of Nokia Developer's Suite for J2ME™. These features include the Class Creator, Package Creator and Application Deployer.

Emulator Management

The emulator management tool manages the configuration and running of Nokia Platform SDKs or Nokia device SDKs. This feature provides a single point from which to verify an application for many different devices.

Audio Converter

The audio converter tool converts MIDI or ring tone XML files to ring tone audio over-the-air (OTA) Java byte arrays and ring tone XML.

DRM editor

Digital Rights Management (DRM) allows developers to control how a phone user uses and re-distributes a MIDlet. The DRM editor can be used to protect MIDlets with a digital rights message.

Ant Script support for tool features

Support is provided for several Nokia Developer's Suite for J2ME™ tool features, such as compilation, packaging and execution, to be used in Ant scripts.

IDE compatibility and related tools

Nokia Developer's Suite for J2ME™ is plug-and-play-ready for the following IDEs:

- Borland JBuilder X Mobile Edition.
- Borland JBuilder 9 Mobile Edition.
- NetBeans IDE 4.0.
- NetBeans IDE 4.1.
- Sun Java Studio Mobility 6 2004Q3.
- Eclipse 3.0.
- IBM WebSphere Studio Device Developer 5.6 (deployment tool only).
- IBM WebSphere Studio Device Developer 5.7 (deployment tool only).

For more information on these IDEs see www.forum.nokia.com/toolpartners.

Documentation

The online documentation provides an introduction and guide to Nokia Developer's Suite for J2ME™, as well as a comprehensive description of the tool's features and functionality.

www.forum.nokia.com/tools



Copyright © 2005 Nokia Corporation. All rights reserved.
Nokia and Nokia Connecting People are registered trademarks of Nokia Corporation. Java and all Java-based marks are trademarks or registered trademarks of Sun Microsystems, Inc. Other product and company names mentioned herein may be trademarks or trade names of their respective owners.

Disclaimer

The information in this document is provided "as is," with no warranties whatsoever, including any warranty of merchantability, fitness for any particular purpose, or any warranty otherwise arising out of any proposal, specification, or sample. Furthermore, information provided in this document is preliminary, and may be changed substantially prior to final release. This document is provided for informational purposes only.

Nokia Corporation disclaims all liability, including liability for infringement of any proprietary rights, relating to implementation of information presented in this document. Nokia Corporation does not warrant or represent that such use will not infringe such rights.

Nokia Corporation retains the right to make changes to this specification at any time, without notice.

License

A license is hereby granted to download and print a copy of this specification for personal use only. No other license to any other intellectual property rights is granted herein.