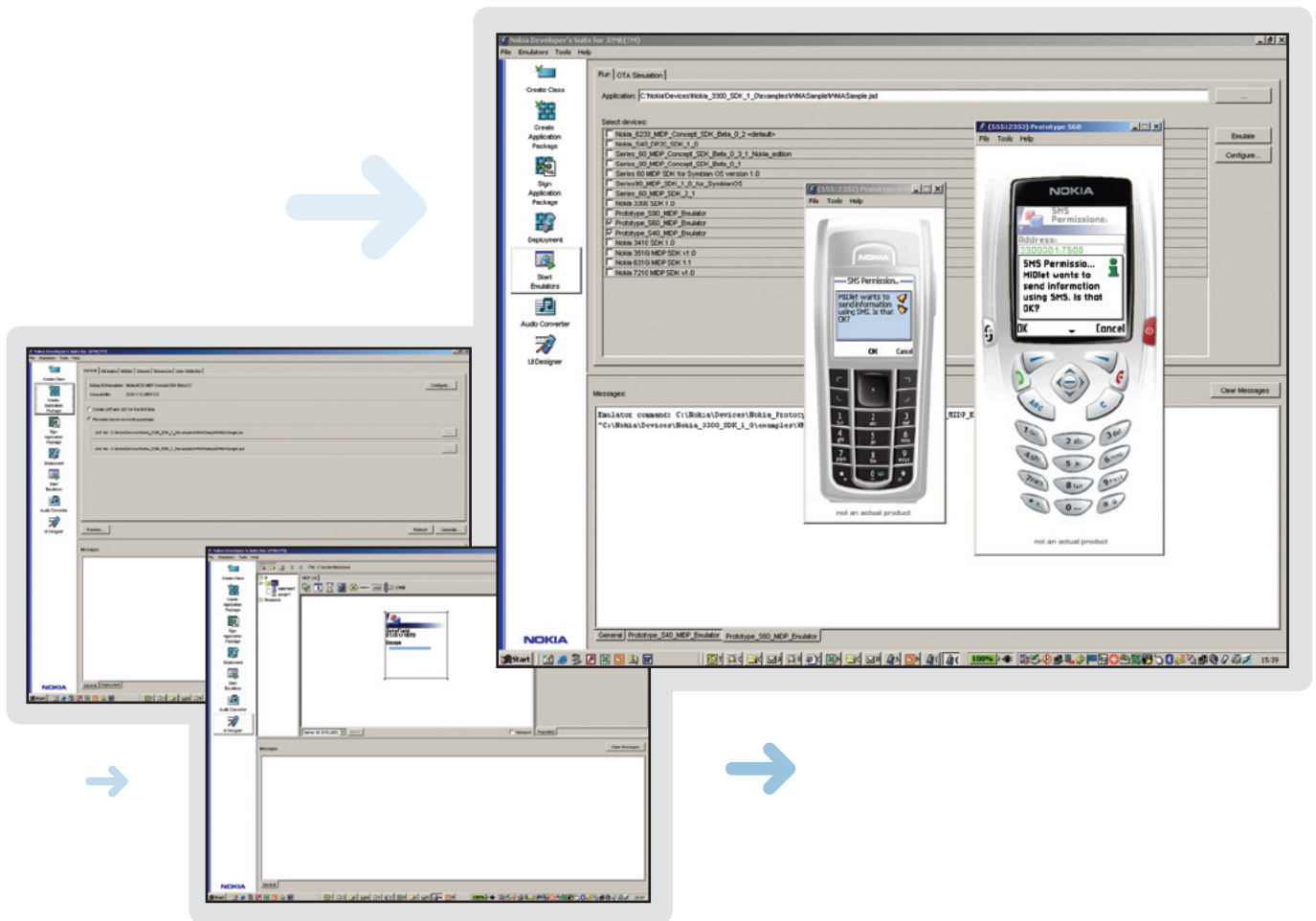


Nokia Developer's Suite 2.2 For J2ME™



Nokia Developer's Suite 2.2 for J2ME™ is a tool for Java™ 2 Platform, Mobile Edition (J2ME™) developers that enhances the development and verification of applications for Nokia devices. It provides tools for creating application classes and packages, signing the application, and deploying it to a device. It is also an essential tool for managing, configuring, and running emulators for various Nokia Developer Platform and device SDKs.

Key Features

- Class creator.
- Package creator.
- Package signer.
- Application deployer.
- Emulator management.
- Audio converter.
- UI designer.

System Requirements

- Red Hat Linux 8.0, Red Hat Linux 7.2, Fedora Core 1.
- Microsoft Windows 2000 (Service Pack 3), or Microsoft Windows XP (SP 1a).
- 256 MB of RAM.
- 210 MB of disk space (Windows).
- 80 MB of disk space (Linux).
- 300-MHz or faster Pentium-class processor.
- Display capable of 16-bit colors with 1,024 x 768 pixel resolution.
- Java Runtime Environment (JRE) 1.4.1 or later.

Class Creator

The class creator tool enables class source files to be created for a MIDlet suite. Class source files are created using the Connected Limited Device Configuration (CLDC) and Mobile Information Device Profile (MIDP) API classes from the default emulator device, speeding up development.

Package Creator

The package creator assists with the construction of MIDP application packages. It efficiently adds all the class and other files to the Java Archive (JAR) file and defines the Java Application Descriptor (JAD) file.

Package Signer

The Sign Application Package tool is used to sign MIDP 2.0 MIDlet application packages. Signing complies with the MIDP 2.0 security model using the signer's private key combined with the public key certificate. A signed application allows a device user to verify the sender and integrity of the application before installation.

Application Deployer

The deployment tool deploys MIDlets to devices or servers through Bluetooth wireless technology, IrDA, USB, or an RS-232 serial cable.

Emulator Management

The emulator management tool manages the configuration and running of Nokia Developer Platform SDKs or Nokia device SDKs. This feature provides a single point from which to verify an application for many different devices.

Audio Converter

The audio converter tool converts MIDI or ring tone XML files to ring tone audio over-the-air (OTA) Java byte arrays and ring tone XML.

UI Designer

The UI designer tool facilitates the design of MIDP user interface layouts and tiled layers for games. The tool can be used with a stand-alone installation of Nokia Developer's Suite 2.2 for J2ME™ or with a supported integrated development environment (IDE).

IDE Compatibility And Related Tools

Nokia Developer's Suite 2.2 for J2METM is plug-and-play-ready for the following IDEs:

- Borland JBuilder 9 Mobile Edition.
- Sun ONE Studio 4 update 1, Mobile Edition.
- Sun ONE Studio 5, Mobile Edition — Early Access.
- Eclipse 2.1.2.
- Eclipse 3.0 M8.
- IBM WebSphere Studio Device Developer 5.6 (deployment tool only).

For more information on these IDEs see www.forum.nokia.com/toolpartners.

Documentation

The online documentation provides an introduction and guide to Nokia Developer's Suite 2.2 for J2METM, as well as a comprehensive description of the tool's features and functionality.

Related Tools

Eclipse 2.1.2, Eclipse 3.0.1

<http://www.eclipse.org/downloads/>

Borland JBuilder 9 Mobile Edition

<http://www.borland.com/mobile/jbuilder/index.html>

Sun Java Studio Mobility 4 and 5

<http://www.sun.com/software/products/jsmobility/>

IBM WebSphere Studio Device Developer 5.6

<http://www-306.ibm.com/software/wireless/wsdd/>

www.forum.nokia.com/tools



Copyright © 2005. All rights reserved. Nokia and Nokia Connecting People are registered trademarks of Nokia Corporation. Reproduction, transfer, distribution, or storage of part or all of the contents in this document in any form without the prior written permission of Nokia is prohibited. Nokia is a registered trademark of Nokia Corporation. The Java programming language and the J2ME platform are registered trademarks of Sun Microsystems. Other product or company names mentioned herein may be trademarks or trade names of their respective owners. Nokia operates a policy of continuous development. Nokia reserves the right to make changes and improvements to any of the products described in this document without prior notice. Under no circumstances shall Nokia be responsible for loss of data or income of any special, incidental, consequential or indirect damages howsoever caused. The contents of this document are provided "as is." Except as required by appropriate law, no warranties of any kind, either express or implied, including, but not limited to the implied warranties of merchantability and fitness for a particular purpose, are made in relation to the accuracy, reliability, or contents of this document. Nokia reserves the right to review this document or withdraw it at any time without prior notice. Other product and company names mentioned herein might be trademarks or trade names of their respective owners.